

La Entrada News

REPORTED BY THE THE RANCHO VIEJO LA ENTRADA COMMUNITY ASSOCIATION

August 2016 - September 2016

Serving the Residents of the La Entrada Community



La Entrada Manager

Michael Smith
Office: 505-954-4479
Fax: 505-954-0018
msmith@hoamco.com
1421 Luisa Street, Ste. R
Santa Fe, NM 87505

La Entrada Board

President
Cass Thompson
505-473-7700
cass@ranchoviejo.com

Vice President
Paul Dillon
505-471-3987
pauldillon87508@gmail.com

Secretary/Treasurer
Alina Catanach
505-473-7700
alina@ranchoviejo.com

La Entrada News

Lisa Marcato, Editor/Layout
Daniel Johnsen,
Design & Photography

Increased Crowds Return for the Annual Raptor Release!



A Great Horned Owl is released by Raptor Center manager, Lori Paras

Photos by Daniel Johnson

For the third year in a row, La Entrada partnered with the Santa Fe Raptor Center for a presentation with education birds, a talk by center manager Lori Paras, and the ever-popular release of one of its rescued raptors. The Santa Fe Raptor Center rescues and rehabilitates injured birds so that they can eventually be released back into the wild. This year over 120 people attended what has now become one of Rancho Viejo's favorite annual events.

After the presentation and Q&A session, everyone headed outside for the release of one Great Horned Owl who, with his magnificent wingspan, swiftly headed east to nearby junipers.

Raptor Release, *continued*

To support the Santa Fe Raptor Center and to help feed recovering birds, the Rancho Viejo Ladies Lunch group gathered together on two separate occasions to make hand-stamped greeting cards and magnets made from recycled board called EcoArt. Between the sale of the cards and magnets at the Raptor Release event and the Fiesta Picnic the following weekend, and donation box contributions, we were able to give the Santa Fe Raptor Center close to \$1100! Another great La Entrada event!



Handmade note cards and stamps by RV Ladies Lunch Group



Raptor Release, continued

A Successful Takeoff and Landing was made by this Rescued and Rehabilitated Great Horned Owl



Save the Date!

Mark Your Calendar!

Sat. Dec. 17, 2016

4th Annual La Entrada Holiday Party

**Party
Location:**

**Rancho Viejo
Sales Office
23 Calle Agua Clara**

**Time:
3 - 6 PM**

**Come and enjoy
refreshments
and celebrate
the season
with your
neighbors.**

**Bring homemade cookies or cakes,
some for the party and some to wrap up
for the RV Fire Station Crew
and local shelters.**

Curbside Recycling is Coming to La Entrada!

by Marilyn Morgan

Curbside recycling is coming to La Entrada, and the HOA will be sending out an email blast to everyone with a date for when this will start. Santa Fe County has passed Ordinance: 2016-4 that requires recycling along with curbside refuse pick up.

The thought is that recycling will be picked up every other week, and trash will continue its current schedule. What does this mean for residents? Everyone will be receiving a new trashcan for recyclable materials at his/her residence; it will be smaller than your current trashcan. Instead of taking just one trashcan to the curb, you will now take two. All recyclables will be collected **except glass**. There has been some confusion about whether or not this will be a requirement but it will be, at least, for La Entrada because we have curbside trash pick-up that is billed through our HOA dues as a pass through cost to residents. The recycling center that is located off Avenida del Sur will continue to remain open.



Curbside Recycling is Coming to Portions of Santa Fe County in November

Santa Fe County Public Works Department Curbside recycling service is coming to the greater Santa Fe urban areas, located outside the City of Santa Fe on **November 1, 2016**.

In late spring, the Santa Fe County Board of Commissioners adopted Ordinance: 2016-4 expanding the County's role in managing solid waste and recycling throughout the County. The ordinance establishes a new "Solid Waste Collection District" consisting of the higher density residential areas surrounding the City of Santa Fe, including Eldorado, Rancho Viejo, Tano Road area, Aldea, and La Cienega.

Solid waste haulers providing curbside residential refuse service in the Collection District will be required to also provide recycling service for a single "bundled" fee at least every other week. Haulers will no longer be allowed to offer "refuse only" service. This program is an alternative to a proposal the County considered early last year. All of the regular household-generated recyclable items currently accepted at County convenience centers, with the exception of glass, will be collected. Due to constraints associated with glass recycling and processing, glass is not included in this program. At least one hauler, currently offers glass recycling pick-up along with the collection of other recyclables.

Homeowners are not required to obtain curbside refuse and recycling service under the County ordinance. If they so choose, citizens may continue to self-haul their refuse and recyclable materials to a convenience center or BuRRT. Under the ordinance, private haulers are required to start providing recycling service by November 1, 2016.

The ordinance also requires all private haulers, providing residential, commercial, and construction/demolition service, operating throughout the unincorporated County to submit a solid waste and recycling data report to the County semiannually (twice per year). The County will use the haulers' solid waste and recycling data to develop additional management policies and programs.

Numbers Tell the Story: Food and Copier/Paper Drive a Stellar Success!



Neighbor to Neighbor Food Drive

by Paul Dillon

Saturday September 17th, La Entrada held the 5th Annual Neighbor to Neighbor Food Drive supporting **The Food Depot** in Santa Fe. Over 75 neighborhoods throughout Santa Fe participate annually. We are proud to say we collected 754 pounds of food (last year we collected 471 pounds). Thanks for a great increase! Monetary donations are not included in this total, as we do not have that info at this time. Thank you to the over 60 households that participated in this year's Food Drive. **The Food Depot** supports organizations and communities throughout Northern New Mexico.



Amy Biehl School Paper Drive

by Paul Dillon

Thank you to La Entrada neighbors who gave reams and cases of paper for the Amy Biehl School on Saturday September 17th. We collected 54 reams of paper which will be presented to Amy Biehl School in the near future. Copy paper is an ongoing need for our schools, thank you again for your generosity.

Winterizing Your Irrigation System

Shut It Down!

by *Daniel Johnsen*

Our first freeze normally occurs around October 10, although sometimes it may be a bit earlier. While that first, light freeze is not likely to damage your irrigation system, it certainly should serve as notice that you need to shut your irrigation system down soon!

Irrigation system shutdown is a pretty simple process; it involves closing the irrigation shutoff valve, opening the electronic valves (solenoids) in the irrigation control box, removing the caps at the electronic valves to allow the system to drain and removing the caps in the round boxes at the ends of the irrigation lines. There are illustrated instructions on our website at:

http://www.laentradaatranchoviejo.org/document_view.asp?id=12

Some of the pieces you'll encounter will probably look like these:



Your irrigation system may look a little different than the one shown in the instructions (mine certainly does!) but the components and the process will be the same. You may need an irrigation valve shutoff tool if the shutoff valve is in a small "sleeve" (as shown on the website) or if the valve is just too far below ground level for you to reach. You will need to look over your property and identify all the round boxes containing capped lines; depending on how the irrigation system was laid out there may be several.

If you are unable to shut the irrigation system down yourself, many of the residential landscaping companies and individual landscaping contractors will be happy to do the job for you for a fee. It would still be wise to review the process on our website and locate the irrigation boxes, so you can make sure the work is done properly and as you expect.

Then once the system is shut down you can just wait for the first snow!

La Entrada News Survey

The La Entrada Communications Committee would like your feedback on our newsletter. To make it an easy process, we have created a simple, online survey form through our website. Please click this [link](#) and complete a very short, six question survey (or cut and paste the link into your browser if it isn't "clickable"):

www.laentradaatranchoviejo.org/eform_detail.asp?id=5&name=La+Entrada+Newsletter+Survey+%2D+October+2016

Note that you will be required to login to the website in order to complete the survey. Aside from the survey questions themselves, if you have any comments or concerns, please address them to Sally Dillon, arttrek@prodigy.net, the Communication Committee chair. **Thank you!**

2nd Annual Fiesta Picnic

by Marilyn Morgan



La Entrada's second Annual Fiesta Picnic was a great success! The afternoon was beautiful with over 75 residents attending. The arrival of the Fiesta Queen and her court, followed by a Mariachi band was surely the highlight of the event! Had you passed our Village Park that afternoon, you would have seen many of your neighbors dancing in the park with the Fiesta Queen and members of her court, and just enjoying the great music and pageantry of color as members marched by.

Tomasita's catered the event and the green and red chili enchiladas were a big hit. Several residents won raffle prizes such as gift certificates to Tomasita's and Meow Wolf. It was easy to win – all you had to do was be there!

We did ask attendees to bring a food donation, and thanks to their generosity 100 pounds of food was collected!

Magnets, note cards and gift bags created by the Rancho Viejo Ladies Lunch Group to benefit the Raptor Center were also on sale and another \$297 was raised. Again, thank you to all!





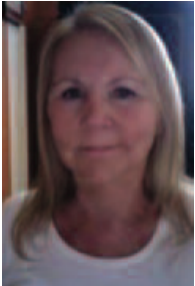
Fiesta Fun Abounds!



LA ENTRADA COMMITTEE REPORTS

DESIGN REVIEW COMMITTEE

by Judy Keller, Chair



Judy Keller, Chair

It is hard to believe that our wonderful summer is nearly over. La Entrada has welcomed many new residents during this time. Thanks to everyone who has submitted his or her landscape plans and exterior home modifications to the Design Review Committee (DRC). Please remember that any changes or additions MUST be submitted to the DRC for approval prior to installation.

When planning outdoor projects, I know you are all eager to begin; however, please consult your *La Entrada Community Association Homeowner Handbook* before beginning any work. This handbook covers design guidelines, architectural standards, association rules, and standards for conduct and use. Specifically, DRC approval is required for all changes or additions to landscaping; walls, fences and gates; changes and additions to lighting; awnings/shades; fire pits, kivas or BBQ pits; flagpoles; portals, patio covers and patio additions; storage sheds, incidental structures, gazebos, ramadas, and shade structures; swing sets, trampolines and play equipment; exterior window coverings or treatments and, placement of yard ornaments.

Do not hesitate to contact your HOA Manager Michael Smith with any questions you may have. The form for submitting landscape drawings, plans and modifications to the exterior of your home is available at the sales office or may be downloaded at www.laentradaranchoviejo.org.

COMMUNICATIONS COMMITTEE

by Sally Dillon, Chair



Sally Dillon, Chair

The La Entrada Communication Committee met on September 12, 2016. After reviewing the minutes from June 2016, the committee recapped recent events – the *Raptor Release* and *Fiesta Picnic*. The events were deemed successful because there was increased attendance at both, as well as a larger donation made to the Santa Fe Raptor Center. At the Fiesta Picnic approximately 100 lbs. of food was collected augmenting food collected at the September 17 Food Drive. Plans for 2017 events will be determined after the holidays. The committee has an interest in continuing its support of our local Amy Biehl School.

Events that have occurred since the September 12 meeting include the *5th Annual Santa Fe Neighbor to Neighbor Food Drive* on September 17, 2016, and the *Copier/Paper Drive* for the Amy Biehl School, both of which were successful due to the generous donations made by the La Entrada community! **A huge thanks to you all!**

Other business at the Sept 17th meeting included the organization of articles for the October newsletter.

If you are interested in having an article published in the newsletter, please submit it digitally to Sally Dillon at arttrek@prodigy.net by the 15th of the month scheduled for publication. For example, for the December issue an article must be received by November 15. The newsletter is published every other month and the next issue will be published around the beginning of December. The Communications Committee, who works as a team in assisting publication, will determine if there is room for the article depending upon space constraints and content. The editor and the committee reserve the right to edit submitted articles. In addition to *La Entrada News* being sent out via email blast, it is also posted on the La Entrada website at <http://www.laentradatranchoviejo.org/home.asp>

If you have any questions or concerns, please contact Sally Dillon at arttrek@prodigy.net. We will be meeting bimonthly in 2016 and 2017.

Committee Reports... from page 8

LA ENTRADA HOA BOARD MEETING

by Paul Dillon, Vice President



President Cass Thompson called the meeting to order at 6:00 p.m. on Thursday, September 15, 2016. Six residents were present. Michael Smith reviewed quarterly and annual financials. A resident asked a question about reserve funds and Michael said he would send a copy of the reserve study to the resident.

Cass gave a brief statement about the Design Review Committee. Paul gave a Communication Committee review, see article by Sally for more info.

Under New Business, Cass gave an overview of a new county required recycling program. Several residents had questions about costs and what was eligible for recycling. Glass is not included. Cass stated that we are still working with MCT to get a cost and that there would be no cost to residents for the 2016 year. That cost would be budgeted and added to 2017 fees. Glass will still be able to be recycled at the Rancho Viejo center on Avan Nu Po which will remain open.

Residents asked questions about the seal coating warranty, and noted several areas that are already wearing through. Michael and Cass stated the seal coat has a two year warranty, and asked residents to send Michael a note where the seal coating needs to be addressed, and he will provide the seal coating company address.

No other questions were asked and the meeting was adjourned at 6:30 p.m.



A great big

Thank You!

to Greg Neal of ExerPlay, Inc.
for repairing our play structure
free of charge!

La Entrada Calendar

Board Meeting **(Closed)**
Thursday, October 10, 2016
5:30 p.m.
RV Fire Department
Community Room
37 Rancho Viejo Blvd.

Neighborhood Watch
Local Contacts

Carol Thompson
Area Coordinator RV
Neighborhood Watch
Home: 471-9044
Cell: 603-0833
Email:
carolath@msn.com

See anything Suspicious?
Call County Sheriff's
Office: 428-3720.

If you wish to remain
anonymous, call Crime
Stoppers: 955-5050.

Large Item Pickup

The date for large item pick up within La Entrada residential areas is the third Friday of each month. The next date of service is Friday, October 21, 2016.

Residents must call Michael Smith at 954-4479 before the date to arrange for large item pick up. Please provide your address, telephone number and description of item(s). Remember to sign up no later than the Monday prior to the Friday pick up date.

Types of items allowed: furniture, yard waste, appliances.

Not Allowed: Most electronics, oil or household chemicals.

Parking Regulations

By Paul Dillon

LA ENTRADA LA ENTRADA at Rancho Viejo
COMMUNITY ASSOCIATION HOMEOWNER
HANDBOOK
Architectural Design Guidelines | Rules & Regulations



1. Parking is prohibited if it creates a safety hazard or prevents reasonable access to residences or other properties.
4. After all other means available to the Association have been exhausted, the Association retains the right to remove and store any vehicle found to be in violation of the Parking Guidelines and Rules, if necessary, without permission of the vehicle's owner or operator. All expenses incurred by the Association will be the responsibility of the Homeowner.
6. Parking of vehicles on sidewalks, landscaped or seeded areas is prohibited.
7. Vehicle (s) shall not be parked or left unattended in such a manner as to block the passage or ingress/egress of other vehicles to any road or driveway within LERVCA.
10. Parking of inoperable vehicles (vehicles with expired tags, flat tires or other signs of non-use), or storage of unused vehicles in public view.
14. Parking is prohibited in alleyways in order to ensure unimpeded access for owners an emergency vehicle.

Pet Welfare and Safety

By Paul Dillon

Due to recent incidents involving unleashed dogs, and injuries sustained encountering coyotes; I would like to



remind everyone of our community guidelines. Also, there has been a sighting of a bobcat in Rancho Viejo North.

From the **Rancho Viejo La Entrada Covenants:**

2. All Pets must be held or kept leashed at all times when in **Common Areas, open spaces, trails, or on the walkways or roads.**
3. Pet owners must immediately pick up all waste and litter created by their pets anywhere within the La Entrada at Rancho Viejo Property boundaries and in walled yard areas.
4. Dog owners are responsible for ensuring that their dogs do not bark excessively and are not a nuisance to other owner or occupants in the community.



Enforce dog leash policies clearly!



Halloween Safety Tips

By Staci Stevens

*The leaves are beginning to turn, the days are getting shorter and the crisp chill of fall is in the air. That can only mean one thing – Halloween is right around the corner! Whether you prefer to carve a jack-o-lantern and curl up on the couch to watch the timeless classic *It's the Great Pumpkin, Charlie Brown*, or to brave the streets with the ghouls and goblins in search of sweet treats, here are a few things we can all do to make sure everyone has a safe and happy Halloween:*

1. Our streets are dark! Trick or treaters should always carry flashlights, glow sticks and/or dress in reflective clothing.
2. Parents, please supervise children and inspect their goodie bags at the end of the night.
3. Popular trick-or-treating hours are 5:30 PM to 9:30 PM, so be especially alert for kids during those hours.
4. Put down your cell phones and turn on your headlights early to limit distractions and make your vehicle visible during dusk.
5. Motorists should take extra precaution at intersections and as they enter and exit driveways.

Whatever you decide to do, have fun and enjoy this fun and beautiful time of the year

Trailblazer Fall Fair

Amy Biehl Community School will be holding its second annual fall fair on **Friday, October 28th from 5:30 – 7:30 PM.** This is one of two major fundraisers for the school and the event is open to the public, so put on your best costume and join us for food, games, prizes, face painting, and more!

Raffle tickets are currently on sale for a host of fun prizes that will be drawn during the fair including a grand prize of \$500 cash. Tickets are \$5 each or 5 for \$20. You need not be present to win. **For tickets please contact Staci Stevens 202-294-3101 by October 21st.** Thanks for supporting your community school!