

# La Entrada News

REPORTED BY THE THE RANCHO VIEJO LA ENTRADA COMMUNITY ASSOCIATION

November 2016 - December 2016

Serving the Residents of the La Entrada Community



## La Entrada Manager

Michael Smith  
Office: 505-954-4479  
Fax: 505-954-0018  
[msmith@hoamco.com](mailto:msmith@hoamco.com)  
1421 Luisa Street, Ste. R  
Santa Fe, NM 87505

## La Entrada Board

President  
Cass Thompson  
505-473-7700  
[cass@ranchoviejo.com](mailto:cass@ranchoviejo.com)

Vice President  
Paul Dillon  
505-471-3987  
[pauldillon87508@gmail.com](mailto:pauldillon87508@gmail.com)

Secretary/Treasurer  
Alina Catanach  
505-473-7700  
[alina@ranchoviejo.com](mailto:alina@ranchoviejo.com)

## La Entrada News

Lisa Marcato, Editor/Layout  
Daniel Johnsen,  
Design & Photography



## An Undeterred Passion

*Photos by D. Johnsen  
and Hye Coh*

*by Lisa Marcato*

The weather on Saturday, September 24 had been beautiful most of the day up until the moment I got in my car to drive south on Via Sagrada to Daniel and Faith Johnsen's home on Punto Nuevo. The wind had suddenly picked up blowing angry pockets of air about and the temperature had dropped significantly. As I approached the house, I could see Cerrillos Hills and the Ortiz in the distance, and watched a threatening mass of gray push its way closer and closer toward what seemed to be Dan's house. I hoped the menacing skies were not an indication of something worse to come for the mysterious 'unveiling' that was about to take place.

I had heard a few people talking about Dan's new acquisition a few weeks back at La Entrada's Annual Fiesta Picnic, and while there I believe there may have been a few select neighborhood friends that received a little sneak preview from Dan. I put these pieces together after hearing comments made by friends exiting his side gate, comments like "amazing" and "incredible," and "dinosaur" and "Z-Tops."

Now, I curious. However, the Fiesta Queen and her court, chaffing dishes full of goodies from Tomasita's, and the energetic mariachis distracted me enough that I passed on a peek; I wanted to wait for the official unveiling.

I parked my car and entered Dan and Faith's home with a plate of cookies and noticed a number of old and new faces milling about. A lovely, bright and cheery open space, I scanned the room. On the polished granite countertop were plates piled high with catalog-perfect cookies, cheesecakes, chocolate cake, and many other indulgences to please the sweet tooth. Faith was behind the counter with a spatula in her hand acutely focused on transferring some perfectly crispy, golden-brown Greek-inspired filo dough triangles onto a plate. I can't report exactly what flavors they were, but I can tell you that I had one of each and they were criminally delicious! Let it

be known, Faith is a really good cook!

By the time I had finished scrutinizing the food offerings and grabbed a drink, Dan

was asking us all to gather outside on the patio. Just off the periphery of the patio was a very large object with an enormous black shroud draped over it. It's backdrop: that threatening gray-black sky I had seen earlier on the way over. Perfect, I thought, I'm in Little Shop of Horrors. Just add a little lightning to the scene and we'll be set! Dan collected our attention and

was soon giving us a sophisticated, gallery-esque level presentation on the artist and sculptor John Wilhelm, and the natural

history of the pre-historic animal that John had so artistically and creatively brought to life through sculpture, the Zuniceratops.

## THE ARTIST

Dan and John Wilhelm first made acquaintance through a shared Facebook picture of one of John's earlier pieces, the original steel and stone cattle that have become so popular and continue to have a loyal internet following. When Dan tried to purchase one of two remaining steel and stone cattle sets, John's wife Karen wouldn't hear of it, offering instead one of John's smaller "Steak Platter Steers" collection that now forage happily across the Johnsen's dining room table.



The artist lives in Springerville, Arizona, about a four-hour drive from Santa Fe via Highway 60 through Socorro, NM. Most of the pieces that John's wife won't let him sell are displayed around their home, Dan said, and he graciously shows them to visitors from all over.

John is almost entirely self-taught, according to Dan, having had only a couple of art classes in school, but he grew up drawing and painting, and took up sculpture later in life. John once told Dan, "I drew constantly; it was just unthinkable that I couldn't be creating art all the time." Later, Dan said, John was amazed to learn that everyone didn't do the same, or in other words: get up every single day and be wholly consumed by your craft. I quickly thought of artists I've known over the years who, were it not for fundamental human needs, would never think of leaving their studios. This was something John was compelled to do; there was absolutely no other choice in the matter. And, as Dan said and the audience agreed, "Those who live their passion without thought to whether or not it will ever pay their way through life, those are the ones who do it best." It is this passion and work ethic that gave us John Wilhelm, certainly one of our country's most prolific and creative artists.

## Z-TOPS HISTORY

The first fossils of Zuniceratops were discovered on November 11, 1996 at "Haystack Butte" in the Zuni Basin of west-central New Mexico, just north of the Zuni Pueblo. The discovery was made by eight year old Christopher James Wolfe (son of the paleontologist Douglas G. Wolfe) during an expedition as part of the Zuni Basin Paleontology



Project. Wolfe went on to establish the White Mountain Dinosaur Exploration Center in Springville, Arizona.

The Zuniceratops dinosaur lived in the middle of the Cretaceous period. The fossils are the oldest horned dinosaur yet discovered and predate the larger and more known Triceratops by about 10 million years. The discovery of these fossils changed the belief that the horned dinosaurs originated in Asia. It is now assumed that the entire family of horned dinosaurs originated right here in New Mexico!

When the White Mountain Dinosaur Exploration Center was created, John and Douglas Wolfe agreed a sculpture of the Zuniceratops should be made to grace its entrance, and while the typical Zuniceratops was only about 3.5 to 4 feet tall, John wanted to make a 'trophy' sized dinosaur. Wolfe agreed that John's five foot tall piece was probably quite comparable to a very *big* Zuniceratops and the project moved forward. The sculpture was displayed there for about a year until the center moved to a new location. Because there was no space to display it at the new location, Z-Tops returned to John's home for another year. During this time John and Karen made a few 'life adjustments' to better manage their circumstances, and decided to dip in to the collection that was living across the street in a vacant lot, and John announced that Z-Tops was for sale.

Dan tried to purchase a smaller piece from John but Karen wasn't cooperating. What's a guy to do? Well, Dan said he drew a breath, a really really big breath, and offered to purchase the sculpture John called Z-Tops; he was successful. In time, Z-Tops traveled to Santa Fe via U-Haul pickup, and a hired crane service lifted him up and gently deposited him into the comfort of Dan and Faith's backyard.



### WAIT! JUST ONE MORE THING . . .

After Dan had imparted everything he wanted us to know about John and Z-Tops, and before removing the black shroud from the massive object, he held up a hand and softly said, "Wait just a minute," and walking over to some audio equipment pushed a button. Otherworldly sound began emitting from the speaker. At first I thought I was hearing the sound track to A 2001 Space Odyssey which would have been equally appropriate given the ominous setting, but I realized later that, no, this was something different. Now, I know that I wasn't the only one curious about Dan's music selection, so I had to ask him, "What was that?"

"The music was '*Fanfare For The Common Man*,' written in 1942 by U.S. composer Aaron Copland," he told me. "Some may be familiar with it from television; a lot of people heard it when CBS Sports used it in the late 70s - early 80s. What you heard was a MIDI (Musical Instrument Digital Interface) file sequenced by an anonymous person, played through a Roland synthesizer connected to my computer, recorded in Garageband, and then exported as an ordinary MP3 file that I could save and play on my phone. That was entirely a digital recording; no real trumpets or tympani were harmed in the performance of this piece."

### La Entrada Calendar

Board Meeting  
**Thursday, January 26, 2017**  
**6:00 p.m.**

RV Fire Department  
Community Room  
37 Rancho Viejo Blvd.

### Neighborhood Watch Local Contacts

Carol Thompson  
Area Coordinator RV  
Neighborhood Watch  
Home: 471-9044  
Cell: 603-0833  
Email: [carolath@msn.com](mailto:carolath@msn.com)

### See anything Suspicious?

Call County Sheriff's Office:  
428-3720.  
If you wish to remain  
anonymous, call Crime  
Stoppers: 955-5050.

### Large Item Pickup

The date for large item pick up within La Entrada residential areas is the third Friday of each month. The next date of service is **Friday, December 16, 2016.**

Residents must call Michael Smith at 954-4479 before the date to arrange for large item pick up. Please provide your address, telephone number and description of item(s). Remember to sign up no later than the Monday prior to the Friday pick up date.

Types of items allowed:  
furniture, yard waste,  
appliances.

Not Allowed: Most electronics,  
oil or household chemicals.



## THE UNVEILING


With the scene set, spotlights on, and the other-worldly musical score adrift in the air, Dan and Faith each grasped an end of the shroud and slowly began pulling it off. Audible gasps and shrieks of 'ew's' and 'ah's' filled the air as the shroud slipped to the ground and we gazed upon Zuniceratops, a five foot tall horned dinosaur. He was, in a word, magnificent! Comprised entirely of metal, his body and head were constructed utilizing all manner and sorts of what I would call 'found objects.' Metal rake heads, car parts, utensils, tools, giant screws and bolts, you name it – it's in there. This is the type of sculpture you want to come back to and re-visit again and again, because once would never be enough, it has so many intricacies to explore. It reminded me a little of a recent visit to *Meow Wolf*: it's overwhelming, confusing, and utterly delightful all at the same time. Tough to get your brain around, you just can't help but stare at it because it is so intriguing. Would I ever be able to see all the objects in this piece in one viewing, I wondered? Doubtful.

As I was musing over this internal challenge, Joyce, who was standing next to me with her son Zach said, "Oh oh, I feel drops," and sure enough as if perfectly timed, the rain began to fall in step with the sporadic flash of white in the distance that seemed to momentarily brand the night sky.

Once we were all inside and protected from the rain, time was spent enjoying the desserts and beverages and company of others. Dan had even provided a continual-loop slide show of some of John Wilhelm's works over the last 40 years on his big screen TV, so I got comfy in a big chair and enjoyed the show, right along with my piece of cheesecake, chocolate cake, and half a dozen cookies. I'll worry about the sugar overload tomorrow, I told myself. I tell myself that a lot lately, but then – La Entrada just has so many terrific people with amazing talents and skills, I find it next to impossible to say 'no' to any of these invites and offerings when there are so many interesting things going on right here in our own backyards. Just an incredible, stimulating, and lovely evening through and through hosted by Dan and Faith! Thank you for sharing Z-Tops with us – I'm sure we will never look out into our backyards the same again, at least, not without first conjuring up some kind of fantastic creature.







Mark Your Calendar!

**Sat. Dec. 17, 2016**

## **4th Annual La Entrada Holiday Party**

**Party  
Location:**

**Rancho Viejo  
Sales Office  
23 Calle Agua Clara**

**Time:  
3 - 6 PM**

**Come and enjoy  
refreshments  
and celebrate  
the season  
with your  
neighbors.**

**Bring homemade cookies or cakes,  
some for the party and some to wrap up  
for the RV Fire Station Crew  
and local shelters.**

**New this year - Hands on/kid friendly activities  
will be available!**

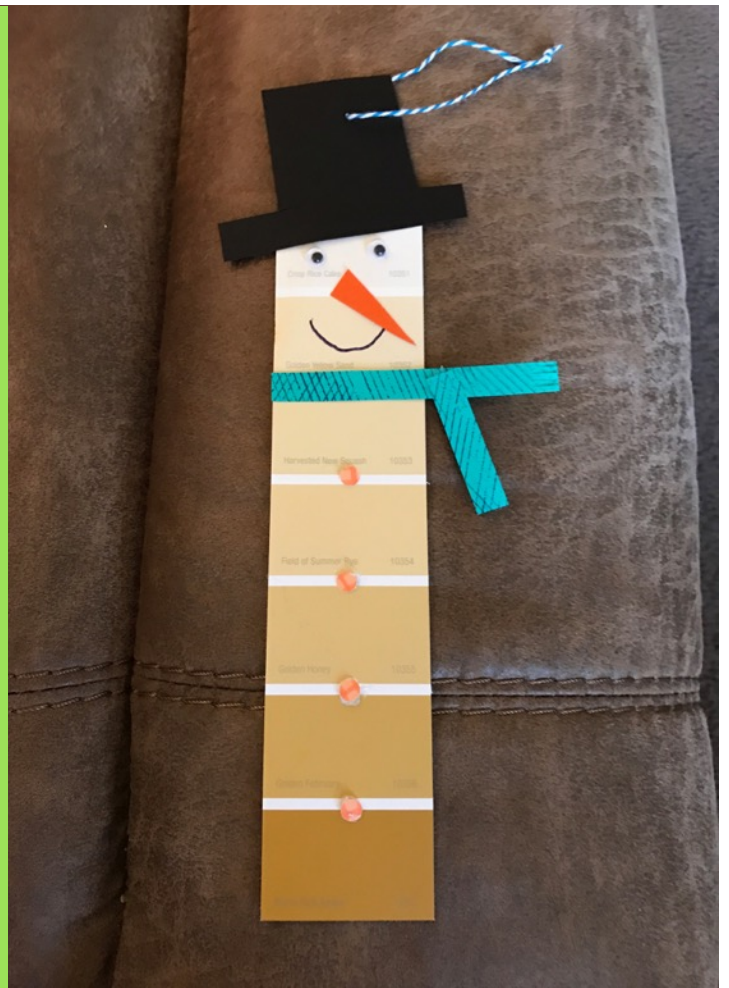
**Make a  
Snow Man  
or a  
Reindeer!**

**Holiday Party**

**12/17/16**

**And bring cookies!**

**3-6pm**



Save the Date for our Annual La Entrada Holiday Party on **Saturday, December 17 from 3-6pm** at the Sales Office. Something new this year – we have a tree to decorate, so we have a couple of hands-on and kid friendly activities such as the paint strip snowman pictured above right. The paint strip can be turned into a reindeer, too. We will have all the materials to make these, plus.... we will be making paper chains. Who doesn't like to make paper chains? Don't forget to bring cookies for the local fire station and a youth shelter. They really enjoyed the cookies last year. Hope to see you at the Holiday Party!







## Food Depot Celebration

*by Sally Dillon*

Lisa Marcato and Sally Dillon attended a celebration for the 5th Annual Neighbor to Neighbor Food Drive that was held on Saturday, September 17. We were given a tour of the facility along with some tasty finger foods. We toured the sorting rooms, the warehouse, and the agency market. We learned that The Food Depot, in addition to the collection of non-perishable food items, also partner with super markets, bakeries, and other agencies for food such as fresh fruits and vegetables. When we were there, they had large bins of watermelons from Texas. It was impressive to see their networking strategies at The Food Depot. They also collect personal care items for people in need. Pet food is another item they provide because the Depot's research showed that people in need were feeding their pets instead of themselves. Another program that the Depot administers is the provision of backpacks filled with bi-weekly food for students to take home from school. There are other programs in place. For more information contact The Food Depot at <https://www.thefooddepot.org>

After the tour, awards and certificates were presented to each of the neighborhoods that participated in the Food Drive. See how we did as a community in the letter from The Food Depot.

Here are some interesting facts from the Food Depot's 2015 Annual Report: "The Food Depot is ending hunger in Northern New Mexico by providing food to a network of over 145 partner nonprofit agencies throughout nine counties. Partner agencies such as food pantries, meal programs, homeless shelters, youth programs, and senior centers distribute food received from The Food Depot to people who are experiencing hunger. Of the people seeking emergency food assistance.

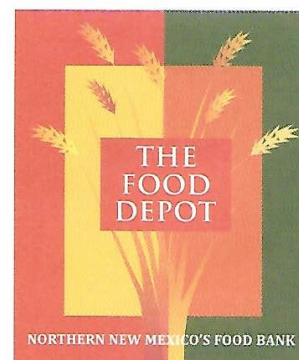
## Food Deport Celebration, Cont'd

Did you know, of the people seeking emergency food assistance:

- 30% of recipients are children
- 21% of those we help are seniors
- 16% are grandparents raising grandchildren
- 89% of hungry households have an annual income of less than \$20,000 annually, which equals \$384 per week
- 61% report choosing between paying utilities or buying food
- 53% of hungry households include at least one person who has worked in the past 12 months. Of households with no one able to work:
- 87% are disabled, retired, in poor health, or act as a caretaker of another person
- 59% have chosen between paying for medicine or medical care or buying food at least once in past 12 months







October 12, 2016

Paul and Sally Dillon  
La Entrada at Rancho Viejo Homeowners Association  
85 Villa Orilla Dorado  
Santa Fe, NM 87508

Dear Mr. and Mrs. Dillon and Neighbors!

Many thanks for joining The Food Depot in our mission to end hunger in Northern New Mexico! We greatly appreciate your generous participation in the **5<sup>th</sup> Annual "Neighbor to Neighbor" Neighborhood Association Food Drive** on Saturday, September 17, 2016.

La Entrada at Rancho Viejo collected **754 pounds of food** and **\$100.00** in monetary donations. Each dollar donated buys 5 pounds of food, so your neighborhood collected the equivalent of **1,254 pounds of food**, which will provide **1,045 meals** for hungry people in our community. Great job!!!

This year, an amazing **77 participating neighborhoods** (40 more than last year!) gathered a phenomenal **15,734 pounds of food** – a 52 percent increase over last year's total of 10,346 pounds! The drive also collected a whopping **\$16,077.00 in monetary donations**, which will buy an additional 80,385 pounds of food. In total, the 2016 "Neighbor to Neighbor" drive donated **the equivalent of 96,119 pounds of food** to The Food Depot – **over 48 tons of food** – providing 80,100 meals for hungry people in our community!

The Food Depot serves as the food bank for Northern New Mexico. Currently, The Food Depot provides food supplies to 160 partner agencies located throughout nine counties in Northern New Mexico. Partner agencies are nonprofit organizations such as food pantries, meal programs, homeless shelters, youth programs, senior centers, homes for the mentally disabled and shelters for battered families. Each month, the food bank distributes enough food to provide nearly 400,000 meals to people in need -- the most vulnerable of our community -- children, seniors, working families, and those in ill health.

On behalf of The Food Depot and Linda Wilder Flatt, Neighbor to Neighbor Food Drive Coordinator, please accept our sincere appreciation for your act of generosity and the important part you have played in improving the lives of your neighbors in need.

Sincerely,

Sherry F. Hooper  
Executive Director



**VISION: Healthy, hunger-free communities in Northern New Mexico**

1222-A Siler Road • Santa Fe, NM 87507 • (505) 471-1633  
[www.thefooddepot.org](http://www.thefooddepot.org)

## KEEPING NEW MEXICO BEAUTIFUL



## Please Recycle:

Paper/Office Paper/Newspapers/Magazines  
Junk Mail/Phone Books/Cereal/Cracker Boxes  
Milk and Juice Boxes/Corrugated Cardboard  
Books/Brown Paper Bags/Paper Egg Cartons  
#1 - #7 Plastics Bottle/Tubs/Plastic  
Rigid Plastic Toys/Hampers  
Metal/Tin Cans/Aluminum Cans  
Foil & Pie Pans/Pots & Pans

## Por Favor Reciclar:

Papel/periódicos/revistas  
Correo desechable/libro de teléfonos  
cajas de cereales/cajas de galletas  
Cartones de leche y jugo/cajas corrugado  
Libros/bolsas de papel marrón  
cartones de huevo  
#1 - #7 botella plástico/tinas/plástico  
Juguetes de plástico/cestas de plástico rígidos  
Latas de metal/latas de aluminio  
botes de aluminio  
Sartenes de arope /ollas y sartenes

## Please DO NOT Recycle:

Glass/Garbage/Food/Light Bulbs/Wood  
Hazardous Waste/Batteries/TV's/Electronics  
Sharp Metal/Yard Waste/Pizza Boxes  
Motor Oil Bottles/Medical Waste  
Needles/Styrofoam/Wrapping Paper  
Computer Monitors/Ink Cartridges  
Plastic Grocery Bags

## Por FAVOR NO Reciclar:

Vidrio/basura/comida/bombillas/madera  
Residuos peligrosos/ pilas/televisiones  
electrónicas/Monitores de computadora  
Metal afilados/residuos de yarda  
cajas de pizza  
Botellas de aceite de motor  
residuos médicas  
Papel de envoltura /abujas  
Cartuchos de tinta  
Bolsas de plástico de la tienda

## Important information to remember about your new recycle container

- Your new recycle cart has a green lid.
- All approved items can be placed in the cart including cardboard. NO plastic bags.
- Place your cart out at the curb no later than 7 a.m. on your regular pick-up day.
- Make sure that the front of the cart faces the street.
- Place your cart 3 feet away from all obstructions, including cars, poles, and additional carts.
- Please don't load your cart with more than 150 lbs.
- The lid of your cart must close with ease.
- If your cart is damaged or broken, missing or stolen, please call 505-345-8651 for a replacement.
- Material left outside your cart will not be picked up.

## Información importante para recordar acerca de su nuevo contenedor de reciclar

- El nuevo contenedor de reciclar tiene tapa verde.
- Todos los artículos aprobados se pueden colocar, incluyendo el cartón. No bolsas de plástico.
- Coloque su contenedor hacia fuera en la acera no más tarde de 7:00 de la mañana en su día de recolección regular.
- Hacer seguro de que la parte delantera del contenedor esta al frente.
- Coloque su contenedor 3 pies de distancia de todas las obstrucciones, como coches, postes, contenedores adicionales.
- Por favor, no cargue el contenedor con más de 150 libras.
- La tapa del contenedor debe cerrar con facilidad.
- Si su contenedor está dañado o roto, desaparecido o robado, por favor llame a 505-345-8651 para un re-emplazo.
- Material dejado fuera de su contenedor no será recogido.

## Please Pick Up After Your Pet

It doesn't take much to remember that we have pets in our community. In fact, if you don't watch your step, you are liable to step in one such reminder. Besides being unsightly and smelly, animal waste can be hazardous to the health of our children who play in the community and other pets. One of the most common forms of disease transmission between dogs is through fecal matter.

When walking your dog in our community, remember that it should be leashed. Also, it is important to remember to immediately clean up after your pet. Take along a baggie with you or get one from the "doggie stations" to pick up waste and then dispose of it.





# NIXLE

## The Fastest Route to Emergency Information in the Community

**Dear Residents,**

**In order to receive timely information regarding Police and School situations in Santa Fe and Santa Fe County, we strongly encourage you to sign up with Nixle. We were out of state and received information about the incident in the Rancho Viejo area within minutes.**

**Here's how to sign up:**

**You can receive alerts via text, email, phone or voice mail. The message is sent to all formats you choose to sign up to receive. We receive text and email. This is really the quickest way to receive emergency information in our community because this is what first responders use.**

**To sign up, go to:**

**<https://local.nixle.com/register/>**

# Hello Friendly Neighbor!

## An Open Invitation to all Rancho Viejo Ladies

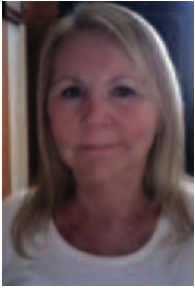
The Rancho Viejo Ladies Group began in March of this year with fourteen ladies meeting at Panera Bread for lunch and lively conversation. We continue to meet once a month for lunch. We have also started the Rancho Viejo Book Club and periodically have Crafting Workshops. Friendships have been forged. We are making wonderful connections. We invite all ladies of Rancho Viejo to join us. Usually 2-3 new members join us each month. Our group is now very diverse. Our December Ladies Lunch & Holiday Party will be on **Thursday, 12/15 at The Ranch House**. If you would like to be included in either lunch, the Book Club or other activities, please contact **Audra Hansche** by email – **Mauied85@AOL.com**. We will use email to communicate most effectively.

## Unleashed: Creativity Abounds at Recent Stamping and Holiday Card Making Workshops with Rancho Viejo Ladies!





# LA ENTRADA COMMITTEE REPORTS



Judy Keller, Chair

## DESIGN REVIEW COMMITTEE

by Judy Keller, Chair

Another year is nearly over. Your Design Review Committee (DRC) wants to thank you for submitting your project plans for review and approval prior to commencement. For those of you who haven't received prior approval, please take a few minutes to submit any unapproved modifications to the DRC. You will need written approval for any changes made to your home should you plan to sell. When planning outdoor projects, I know you are all eager to begin. BUT, please consult your *La Entrada Community Association Homeowner Handbook* before beginning any work. This handbook covers design guidelines, architectural standards, association rules, and standards for conduct and use. Specifically, DRC approval is required for all changes or additions to landscaping; walls, fences and gates; changes and additions to lighting; awnings/shades; fire pits, kivas or BBQ pits; flagpoles; portals, patio covers and patio additions; storage sheds, incidental structures, gazebos, ramadas, and shade structures; swing sets, trampolines and play equipment; exterior window coverings or treatments; and, placement of yard ornaments.

Do not hesitate to contact your HOA Manager, Michael Smith with any questions you may have. The form for submitting landscape drawings, plans and modifications to the exterior of your home is available at the sales office or may be downloaded at [www.laentradaranchoviejo.org](http://www.laentradaranchoviejo.org).

## COMMUNICATIONS COMMITTEE

by Sally Dillon, Chair



Sally Dillon, Chair

Since the last newsletter a couple of us attended a celebration at the Food Depot. The purpose of this celebration was to recognize the work done for the 5th Annual Neighbor to Neighbor Food Drive organized by The Food Depot. The food collected during the citywide food drive provided food for just a few weeks. Recently our family donated a couple of frozen turkeys to The Food Depot for Thanksgiving. As we approach the holidays, the Food Depot will welcome non-perishable food, other product donations, and monetary donations for our Northern New Mexico neighbors in need. For donations information, check <https://www.thefooddepot.org/Donate/>. For information about The Food Depot, and volunteering, check out <http://www.thefooddepot.org/>.

Speaking of the holidays, the La Entrada Communication Committee is preparing for the upcoming Annual Holiday Party on Sat. Dec 17th at the Sales Office located at 23 Calle Agua Clara from 3 – 6PM. Please mark your calendars! When attending, please bring homemade cookies or cakes, some for the party and some to wrap up for the Rancho Viejo Fire Station Crew and for homeless shelters.

New this year, at the party, is holiday tree trimming with some decorations we will make at the party! These are simple hands-on and kid friendly decorations that all are invited to make. We look forward to seeing you at the Annual Holiday Party!

The La Entrada Communication Committee meets every other month to prepare for the upcoming newsletter and to plan upcoming events. We are partnering with the Amy Biehl School on various events including the collection of Box Tops for Education. For more information about the Box Top collection, please see the signs posted at the mail boxes on Calle Agua Clara.

If you have an article you would like to be included in the newsletter, please send it to Sally Dillon [arttrek@prodigy.net](mailto:arttrek@prodigy.net) by the 15th of Jan, March, May, July, Sept, and Nov. The Communications Committee, who works as a team in assisting publication, will determine if there is room for the article depending upon space constraints and content. The editor and the committee reserve the right to edit submitted articles. In addition to La Entrada News being sent out via email blast, it is also posted on the La Entrada website at <http://www.laentradaranchoviejo.org/home.asp> If you have any questions or concerns, please contact Sally Dillon at [arttrek@prodigy.net](mailto:arttrek@prodigy.net).

## Developer's Corner

*By Cass Thompson*

As you many of you may have noticed, Estancia Homes, LLC is working on developing the next sub-phase of La Entrada, which will consist of 58 lots. The contractor is aware of the impact the construction activity has had on residents, and is doing his best to minimize inconvenience, dust, and congestion.



In addition to the phase presently under construction, La Entrada has three additional sub-phases to the west of that activity which will complete La Entrada Phase 1, at which point we will turn our attention to La Entrada Phase 2, the land south of Rancho Viejo Blvd.

All of the lots in the remainder of La Entrada Phase 1 range in size from a width of 45 feet to 85 feet. In the past, lots have been as narrow as 32 feet which only allowed for a one car garage. With our new, wider lot inventory, all houses will have two car garages.

Estancia Homes, LLC should close on twenty-eight homes in 2016. The new lot release next year will allow for a broader selection of products that will range in size from approximately 1,300 sf up to 2800 sf. With a wider selection of lots, we are looking forward to a strong 2017.





## WINTER SNOW REMOVAL

As the snow approaches, just a few helpful reminders:

1. Rancho Viejo Blvd is a Santa Fe County road and the county is responsible for snow removal and sanding.

2. La Entrada provides snow removal within our community as follows:

Main roads are plowed when we have a snow accumulation of 3 to 5 inches. Alleys are plowed when we have an accumulation of 6 or more inches. Areas around mailboxes will be cleared when there is 3 or more inches.



3. Sidewalks and driveways are the responsibility of the homeowner. Please, let's keep our community safe.

# Prestigious Award Goes to Amy Biehl Teacher

by Stacy Stevens



*Photos courtesy of the Milken Family*

On November 2, 2016, the students at Rancho Viejo's Amy Biehl Community School were told to dress in school colors – blue and green. There would be an assembly that day to honor the school's LEED certification and they wanted to show school pride. Little did anyone know that the assembly was all part of an elaborate surprise to celebrate one of our country's very best teachers.

It wasn't until Dr. Jane Foley, senior vice president of the Milken Family Foundation, was introduced that the audience began to think something else was underway. Dr. Foley announced that a winning educator would be taking home a cash prize. To add to the excitement in the room,

a group of "sixth grade ambassadors" came forward and were handed signs that revealed the prize amount, digit by digit - \$25,000!

Finally, it was time to reveal the surprise. The winner of the prestigious 2016-2017 Milken Educator Award was 2nd grade teacher, Melissa Kovac! A thoroughly surprised and teary-eyed Ms. Kovac was cheered by her students and fellow teachers. She encouraged her students to, "Keep learning, be kind to each other, and always keep doing your best."

Ms. Kovac is one of only 35 recipients of the award nationwide and the only teacher to receive the distinction this year in New Mexico. Often described as the "Oscars of Teaching", the Milken Award recognizes teaching excellence and a commitment to students, their families and the community.

