

La Entrada News

REPORTED BY THE THE RANCHO VIEJO LA ENTRADA COMMUNITY ASSOCIATION

Issue 4, Aug/Sep 2017

Serving the Residents of the La Entrada Community



La Entrada Manager

Michael Smith
Office: 505-954-4479
Fax: 505-954-0018
msmith@hoamco.com
1421 Luisa Street, Ste. R
Santa Fe, NM 87505

La Entrada Board

President
Cass Thompson
505-473-7700
cass@ranchoviejo.com

Vice President
Paul Dillon
505-471-3987
pauldillon87508@gmail.com

Secretary/Treasurer
Alina Catanach
505-473-7700
alina@ranchoviejo.com

La Entrada News

Lisa Marcato, Editor
Daniel Johnsen, Consulting

Signage Variance Meeting for Proposed Pilot Flying J Truck Center Draws Large Crowd

June 20, 2017

by Sally Dillon

The meeting was held in a tent behind the Inn of Santa Fe. Outside the tent, the SaveSFGateway group had petitions to sign and had people in T-shirts, signage and postcards that stated, "**Keep Santa Fe Beautiful NO Pilot Flying J Truckstop in Santa Fe.**" The organization had sent out a well-researched information kit along with a recently updated version prior to the meeting.

Inside the tent, the space had long tables with rows of chairs set up with seating for about 60 people, however a couple hundred people came to the meeting. Mr. Siebert, land planner and facilitator for the meeting and others started moving tables out of the way and got more chairs, however, there were so many people in attendance that many had to stand, and there were even people outside the tent who could not get in. Things were a bit chaotic before the meeting, which started 20 minutes later than planned.

Mr. Siebert seemed surprised at the number of concerned residents attending and suggested the meeting be postponed until a larger venue could be secured. The attendees wanted to proceed with the meeting because they were already there. Mr. Siebert stated that Mike Hamil from Pilot Flying J was at the meeting since Ross Shaver could not attend due to family issues. There was a recap of some concerns addressed at the May 9th meeting including presenting an up to date aerial map obtained from the highway dept. It was clarified that out of the 26-acre parcel of land, 10 acres would be for the Truck Center.

He also stated that the Traffic Study has been completed a month prior to the June 20th meeting. Traffic was studied during peak morning and evening times with projections for 2019 and also for 10 years later. It was also stated that dual



Signage Variance Community Meeting, *Continued*

tandem trucks, based on traffic engineer information, will be able to exit off I-25 to go to the proposed Truck Center.

According to the Sustainable Land Development Code, gas stations are not allowed, so the proposal to be submitted on June 23rd was submitted as a "Conditional Use" Proposal. Because "Conditional Use" status there will be two hearings: the first with the hearing officer, and the second with the planning commission.



After a while Mr. Siebert said that if attendees chose to stay it would be counted as the required meeting, so many of the attendees walked out of the meeting, in an effort, to delay the process. Reports indicate that a new meeting will be scheduled at a different venue, most likely in late July. We recently received the "Notice of a Community Meeting" sent from Mr. Siebert's office that the rescheduled meeting will be July 18, 2017 at the Santa Fe Community College in the Jemez Room at 6:00pm. We will report on that meeting as well.

We encourage all residents to attend any of the meetings related to the



Proposed Flying J Truck Center process for further information and so your voice, as a resident, can be heard. SaveSantaFeGateway.com has an extensively researched information packet/kit. Please email savesfgateway@gmail.com for more information.

La Entrada Calendar

Board Meeting
Thursday, ???Date???
6:00 p.m.
RV Fire Department
Community Room
37 Rancho Viejo Blvd.

Neighborhood Watch Local Contacts

Carol Thompson
Area Coordinator RV
Neighborhood Watch
Home: 471-9044
Cell: 603-0833
Email: carolath@msn.com

See anything Suspicious?

Call County Sheriff's Office:
428-3720.

If you wish to remain
anonymous, call Crime
Stoppers: 955-5050.

Large Item Pickup

The date for large item pick up within La Entrada residential areas is the third Friday of each month. The next date of service is **Friday, August 18, 2017.**

Residents must call Michael Smith at 954-4479 before the date to arrange for large item pick up. Please provide your address, telephone number and description of item(s). Remember to sign up no later than the Monday prior to the Friday pick up date.

Types of items allowed:
furniture, yard waste,
appliances.

Not Allowed: Most electronics,
oil or household chemicals.

Report on the July 18, 2017 Community Meeting on Signage Variances for Proposed Pilot Flying J Truck Center

By Sally Dillon

Residents piled into the Jemez room at the Santa Fe Community College after first passing a table to sign petitions against the proposed Truck Center, and picked up materials on the Santa Fe County Sustainable Land Development Code (SLDC), and their “Save Santa Fe Gateway” turquoise t-shirts. A table provided by the facilitator of the meeting with forms for questions and meeting guidelines clearly demonstrated Mr. Siebert’s staff were approaching this meeting with much improved preparation compared to the chaotic June 20th tent meeting at the Inn of Santa Fe. Siebert was seen talking to SFCC security guards and the slide presentation was visible to all attendees. Approximately 216 seats were made available for attendees for the roughly 230 people that attended the meeting.

Siebert began the meeting promptly at 6pm by reviewing ground rules for speaking. He introduced Ross Shaver, the Pilot Flying J representative. Siebert began a slide show with an aerial view of the location of the site, an image of the plot of land depicting the site of the proposed truck stop. The slide show continued with an illustration of the aerial layout of the proposed Truck Center with a listing of the sign locations. There was also an illustration of the monument sign that exceeds county SLDC allowable height by 5 feet, as well as the location of this sign. The location of “wall art” was shown on side elevations of the building, as well as an artist rendering of the center. Canopy sign illustrations were also shown depicting which restaurants are located inside. Illustrations were also shown for Directional Signs, “Drive Thru” signs, and the large Freestanding Certified Scale sign. There was also a chart showing sign type, location, size.



View of proposed Pilot Truck Stop location entrance from the Rt. 14 and Rancho Viejo Blvd intersection

Report on July 18, 2017 Signage Variance Meeting, *Continued*

Of particular interest was the **“Summary of Sign Data”** slide as it showed the total square footage of the Pilot Flying J signs was 1,316 sq. ft., and yet the total allowable amount allowed under SLDC standards is a mere 150 sq. ft. It is for this reason that the Proposed Truck Center is required to request a variance from the county because of these significant size variances. The allowable SLDC size was the topic of many questions from the residents.

After the presentation approximately 20 attendees were permitted to speak. Topics included:

- The idea that that the Truck Center is visually in conflict with the concept of the Scenic Byway, which Rt. 14 is for people to drive.
- Questions about the Traffic Study (when it was done, during school and commuting hours?)
- Consideration of other locations than the gateway to Santa Fe?
- The conflict and confusion with the divergent diamond interchange
- Was Pilot Flying J considering purchasing the neighboring unsold plots of land adjacent to the proposed Truck Center?
- Are other variances being requested?
- Are there going to be other signs on the highway?
- What about trucks exiting at Rt. 599 not in the Truck Center, but parked along the side of Rt. 14?
- Other studies, such as noise, environment, air quality, following the Dark/Night Sky ordinance?
- Visibility of signs to residents?
- Quality of life – clean environment, safety, crime, trafficking?
- Concern that Rancho Viejo Blvd. is the one and main exit out of Rancho Viejo
- Approval process?
- Indigenous ownership of land.

Responses included the steps for submitting application, public meeting with the Hearing Officer, public meeting with the Planning Commission before the Board of County Commissioners public meeting. The Traffic Study was done several months ago. There will be signs on I-25. The county wanted, in addition to the variances for signs, an application for subdividing the full 26-acre parcel. The lights comply with the state Night Sky ordinance. An environmental impact study is part of the application process. A couple of comments that riled the crowd were when Ross Shaver stated that there would be no impact to traffic by having the Truck Center and to compare the Truck Center to a “Mini Mall” was silly, but all in all, the attendees remained, for the most part respectful containing their concerns. The meeting was ended at 7:30pm.



UPDATE: PFJ APPLICATION DELAYED: The Pilot Flying J application submitted to the Santa Fe County to build a truck center at the intersection of Rt. 14 and Rancho Viejo Blvd. was rejected because certain Items were not included with the application. They will re-submit in late August, according to the Santa Fe New Mexican, July 28, 2017. “The Pilot Flying J Co. application lacked a plan and profile stamped by a New Mexico-registered engineer for site access; a plan and profile for on- and off-site water and sewer lines; a plan for the size, location and irrigation of a cistern; an illustration of traffic circulation in the site development plan; a water budget for the facility; and specifications for exterior lighting.”

Steps in Pilot Flying J Travel Center/Truck Terminal Application to Santa Fe County

URL: SaveSFGateway@gmail.com

FaceBook Page: [Save Santa Fe Gateway](#)

Here is a list of steps you can use to track the progress of the Pilot Flying J (PFJ) company's land use application. You can follow these steps in combination with information that is provided online by the Santa Fe County Growth Management/ Land Use Department, Building and Development Services at:

http://www.co.santa-fe.nm.us/growth_management/building_development_services

- As shown below, asterisks * and notations in red show points in the process where you can attend public meetings to speak, when invited to speak.
- An 'x' on the line shows action already completed; dates of completion are listed.
- Unless otherwise noted, future dates of meetings or required submissions are "to be determined" TBD.

Please note that meetings will require decorum to be effective. Being respectful of Pilot Flying J representatives is important, even though we may strongly disagree with their proposal and application. Your input in the form of letters, emails and phone calls should be directed to: Jose Larranaga, Case Manager, at 505-986-6296 or joselarra@santafecountynm.gov

Process Steps

1. X Pre-application meeting between Pilot Flying J and County Technical Advisory Committee – PFJ Pre-app Referred to County Land Use Division - Case Manager Assigned: Jose Larranaga.

2. * Pre-application Neighborhood Meetings (15 days notice)

 X Meeting 1: May 9 2017 at Chavez Center - Public Input at Meeting

 Meeting 2: June 20 to be rescheduled in July-date TBD - Public Input at Meeting

- Terminal application continued on next page

Steps in Pilot Flying J Travel Center/Truck Terminal Application to Santa Fe County

URL: SaveSFGateway@gmail.com

FaceBook Page: Save Santa Fe Gateway

3. _____
4. _____
5. _____
6. _____
7. _____
8. _____
9. _____
10. _____

PFJ submits application. Includes report on pre-app neighborhood meeting(s) (TBD)

_____ County assigns a case number to the application, publishes online

_____ Begin 30-day agency review process (agencies selected by County staff)

Publication of Required Public Hearing by PFJ - Date TBA (15 days notice)

* Public Hearing with Hearing Officer (an attorney) - **Public Input at Meeting** – Date TBA Issuance of Recommended Decision and Order by Hearing Officer – Date TBA

* Planning Commission Public Hearing - **Public Input at Meeting** - Date TBA Final Action by Planning Commission
Appeal Opportunity

Final Action by Board of County Commissioners

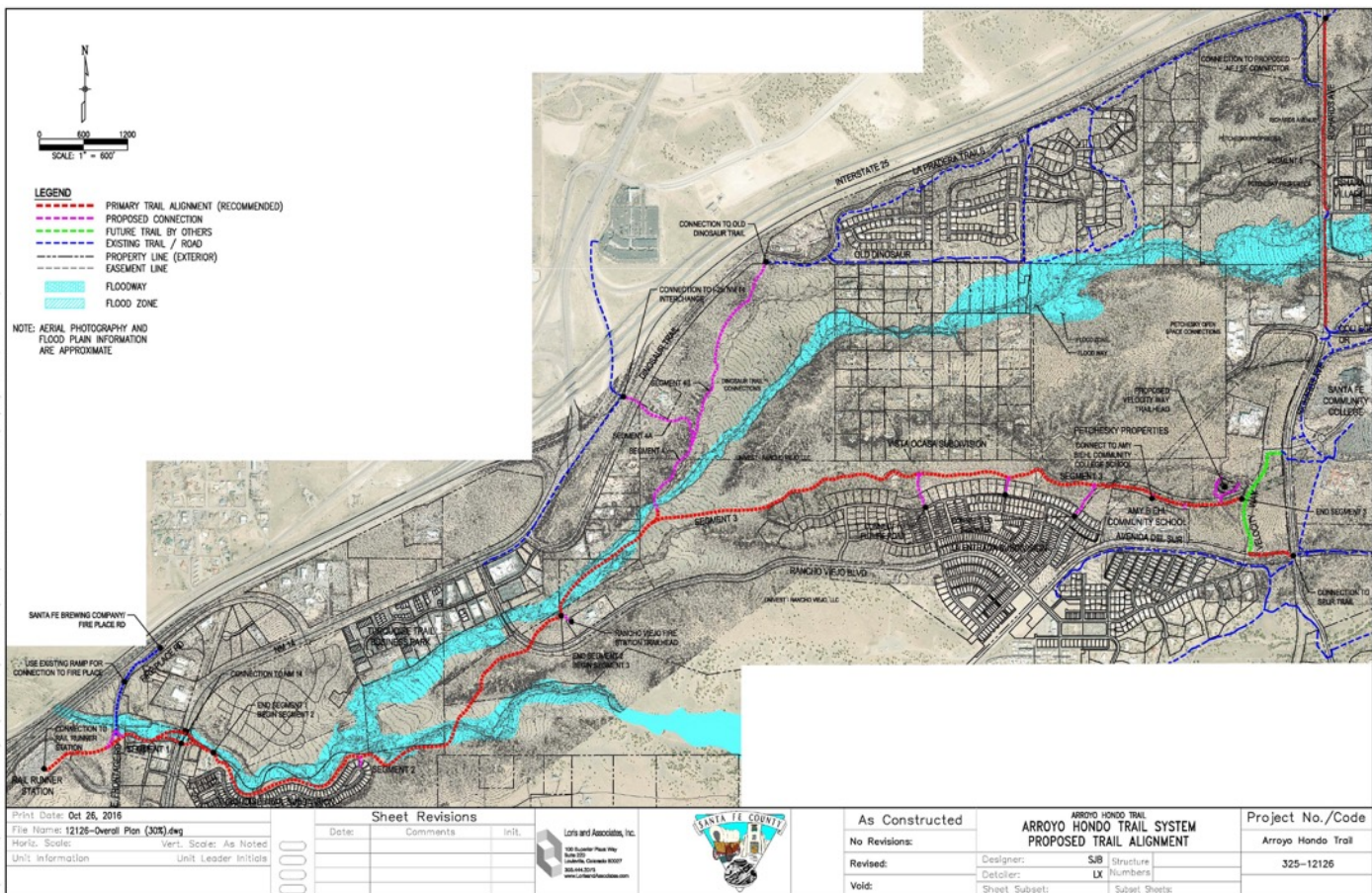
Note: This information is provided only for information and is subject to change. It is not intended as legal advice and does not intend to represent Santa Fe County, its departments, offices or staff in any way.

Arroyo Hondo Trail Meeting

June 8, 2017

by Paul Dillon

About 30 people attended the meeting held at the Rancho Viejo fire station. The meeting was led by Colleen Baker, Project Manager for Santa Fe County; Maria Lohmann, Open Space and Trail Planner, and Scott Belonger, Engineer. The purpose of this meeting was to get feedback from residents on the area of the



An overview of the trail was presented. There are 6 miles of trails planned broken into 5 segments for development, which will not be developed in order. Segment 1 is from Rt 599 at the Rail Runner Station to the Turquoise Trail subdivision. Segment 2 runs from the open space at the Turquoise Trail subdivision to Rancho Viejo Blvd where it crosses the road just southwest of the fire station and heading west of it. Segment 3 comes up from the fire station, behind the north end of La Entrada and Amy Biehl School toward Richards Road. Segment 4 goes from the fire station to Dinosaur Trail where it will connect to other trails. Segment 5 will go from Richards Road to the NE connector.

Arroyo Hondo Trail, *Continued* -

The plan to go from the Rail Runner to the Community College is in the Community College District Plan and would include bikes, peds, and walking, with a separate equestrian trail. Following AASHTO (American Association of State Highway and Transportation Officials) regulations, the minimum width for the trail is 10 feet. With ADA guidelines, there is a maximum grade of 5%, and a firm, stable path.

Concrete, colored to match the natural environment, will be the surface because it requires less maintenance than other options. There will be some retaining walls, drainage systems, 2 bridges made with stone masonry and weathered steel. They will be approximately 100ft in length. Two underpasses made from aesthetically done colored concrete are planned. One will be located near the abandoned on-ramp on Fireplace Rd (pending Dept. of Transportation approval) near the Rail Runner station. The other will be at highway 14 near the end of segment 1. As the trail heads toward Rancho Viejo Blvd, there will be a bridge. At Rancho Viejo Blvd, there are plans for a push button flashing light at the crossing, which is located near the Rancho Viejo Homes sign, just west of the fire station. There are no plans to widen Rancho Viejo Blvd. Presently, approximately 4,000 cars a day travel Rancho Viejo Blvd, Scott stated.

At Segment 3 and 4, the trail location might be adjusted to accommodate existing power lines. There will be connectors to the north side of La Entrada and possibly one connecting at the school. The trail will be approximately 170ft from the Rancho Viejo lots. With the developer plans for the Velocity Way area undetermined, the plan for construction of Segment 3 is possibly more than 5 years away; however, there is the possibility of a trail head near there with 25 car parking spots and 5 trailer spots, depending on the plans near Velocity Way. On the trails dogs will need to be leashed, and there are plans to have trail maintenance crews.

There was an opportunity for residents to ask questions and to provide comments.



Dale Ball Trail

Join us for a Presentation by The Santa Fe Raptor Center and release of rescued and rehabilitated raptors

When: Sun. Aug. 27, 2017 at 6:00PM

Where: IAIA Hogan - 83 A Van Nu Po

The Santa Fe Raptor Center cares for injured birds in order to release them back into their natural habitat.

There will be locally created hand-stamped greeting cards and other items available. Donations for The Santa Fe Raptor Center are greatly appreciated.



Come to the Raptor Release on Sun. Aug. 27th at 6pm at the IAIA Hogan at 83 A Van Nu Po

With a donation to the Santa Fe Raptor Center, select hand-made greeting cards 2 for \$5.00 and other very cool items to bring home.





**Everyone is invited to
the Fiesta Picnic
on
Sat. Sept 9, 2017
in the La Entrada park
on
Via Punto Nuevo & Via Sagrada
at
3:00PM - 6:00PM**

- * Dinner will be provided, catered from Tomasitas
Please bring you own beverage,
chairs/blankets and please bring a friend (s)!**
- * Please bring a canned food item to start our
Sept 17th Food Drive donations towards meeting
our 1500lbs overall goal.**





Santa Fe Neighborhood Associations Neighbor to Neighbor 6th Annual Food Drive

All residents in Rancho Viejo are welcome to make donations to The Food Depot to help in their work against the reality of hunger in Northern New Mexico.

Many neighborhood associations across Santa Fe are participating in a one-day "Neighbor to Neighbor" Food Drive.

In 2016 our La Entrada donation was equivalent to 1100lbs of food. This year, with a larger community, our goal is to contribute 1500lbs of non-perishable food and monetary donations. One dollar is approximately equal to 5 meals and \$20 is 100 meals. Checks can be made out to "The Food Depot" with La Entrada in the memo section.

Saturday, September 16th from 9:00 AM to noon:

Drop off your non-perishable and monetary donations at the corner of Rancho Viejo Blvd. and Calle Agua Clara (one block west of Avenida del Sur) near the mailboxes.

Northern New Mexico's Food Bank

www.thefooddepot.org

La Entrada Neighbor to Neighbor Food Drive

By Paul Dillon

This is the 6th anniversary of The Food Depot's Neighbor to Neighbor Food Drive.

Last year 77 neighborhoods collected food and monies totaling more than 96,000 pounds. Thank you to all that helped to make a positive impact to end hunger.

The Food Depot provides food to 145 partner agencies serving 9 counties in Northern New Mexico. Each month enough food is distributed to provide over 430,000 meals to people in need.

For La Entrada, this will be our 5th year participating; last year we gave the equivalent of 1,100 pounds of food. Thank you!

This year's drive will take place on **Saturday September 16th**.

Collection of non-perishable food & personal care items, as well as monetary donations will take place from 9am to 12 noon at the mail boxes on Calle Agua Clara north of Rancho Viejo Blvd.

Thanks to HOAMCO who will again provide donation bags that will be distributed by ProScape Landscaping the week before the event.

Thank you for your past and future participation in the Food Drive!



Most Needed Items

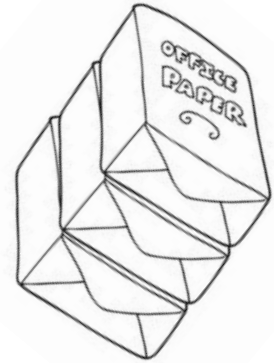
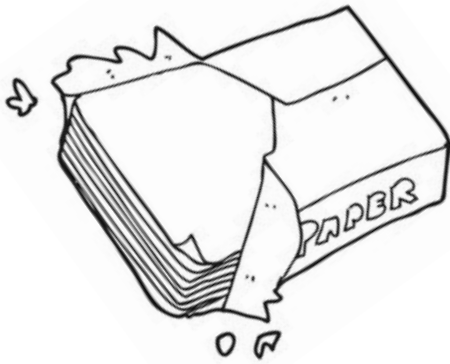
Food
 Peanut Butter
 Canned Tuna, Salmon & Meats
 Milk, Dried or Evaporated
 Canned Fruits & Vegetables
 Soups, Canned & Dried
 Nuts and Seeds
 Beans, Canned & Dried
 Pantry Staples: Flour, Cornmeal, Spices
 Infant Formula & Baby Food

Household and Pet Food
 Hygiene Products
 Dish Soap
 Deodorant
 Toothpaste, Toothbrushes
 Shampoo & Conditioner
 Toilet Paper, Disposable Diapers
 Dry or Canned Dog Food/Dry or Canned Cat Food

Note: The following items CANNOT be accepted by The Food Depot: perishable and frozen foods, home-cooked and home-canned foods (such as jams and jellies), bulk foods that you packed, and opened packages of food.

We will also be collecting reams & cases of copy paper for the Amy Biehl School for those whose wish to donate.





Copier Paper Drive for Amy Biehl School



In addition to collecting donations for the 6th Annual Santa Fe Neighbor to Neighbor Food Drive on Sat. Sept 16, 2017, the La Entrada Community is also collecting reams or cases of copier paper for Amy Biehl School.

Please bring your copier paper donation to the same location as the Food Drive, Calle Agua Clara and Rancho Viejo Blvd at the mailboxes near the Sales Office.

Thank you for supporting our community school!

LA ENTRADA COMMITEE REPORTS



HOA Meeting – July 20, 2017

by Paul Dillon

The meeting was called to order and the minutes from the previous meeting were approved.

Michael Smith, La Entrada HOAMCO Manager, reviewed the financials. The checking account has around \$74,000, but \$10,000 will be used for the variable speed pumps for Ranchland Utilities to more effectively move the treated water from the plant to La Entrada for watering the common areas and parks in the community. There is also about \$160,000 in reserve, with around \$4,400 put into the reserve fund each month in preparation for any major repair work done in the future. The new reserve study report is being finalized.

In earlier budget planning prior to curbside recycling, the board had an estimated figure for trash and recycling in the budget, but since the estimate was a little high, residents will receive a \$10.00 credit on their 4th quarter HOA bill. Budget planning that occurred in the fall for this year is an estimate, so sometimes the actuals are a bit different.

During the New Business portion of the meeting, Cass stated that conversations he has had of late regarding worrisome traffic speed on Rancho Viejo Blvd will most likely result in a Traffic Impact Analysis with costs to be shared between the county and the developer. This study will be able to include traffic predictions for La Entrada built out into the future. This is the first step that must be taken before any action is taken. A resident commented about a traffic study done in March and that the numbers showed approximately 2,200 vehicles heading south and 2,300 vehicles heading north with speeds between 29 -45 mph. Cass suggested that residents continue to call the sheriff's office regarding speeding cars. The study will also determine if any additional stop signs are warranted.

A resident brought up a concern about drones and Cass stated that the attorney for the HOA has language for a simple rule regarding the use of drones that could be added to HOA documents. Notice will be mailed to residents 5 days prior to the meeting when the rule would be adopted. Even though the rule could be adopted, enforcement of it would be very difficult. Other questions included ideas for making the locks on the mailboxes work better. Michael said that was a Post Office issue. Another question was raised about having covering at nearby bus stops, and Michael suggested that the resident contact the Santa Fe Trails Bus Company to see if there were any plans to install covers at nearby bus stops.

In further New Business, a resident wanted to know the identity of the owners of the land for the proposed Pilot Flying J Truck Center. Cass stated that that is a separate entity other than that of the housing development. The resident wanted to know why the HOA can't take a position in the Proposed Pilot Flying J Truck Center. Michael stated that this type of issue is not in the HOA jurisdiction and the same goes for political, safety, and security items. He cited the example of the Neighborhood Watch shooting in Florida by a man in charge of security on the HOA Board. This created serious and complex issues and that is why our Neighborhood Watch in Rancho Viejo is not a part of the RV HOA. Vice president of the HOA board Paul Dillon stated that the list of HOA duties is located in the bylaws and charter, and reminded the group in attendance that all 3 of the Rancho Viejo HOAs are remaining neutral on this issue. The HOA does not get involved in anything beyond the scope of its governing documents. Another resident commented on the proposed Pilot Flying J Truck Center impact on resident investments, and wondered what impact it will have on sales, development, and management.

Residents in attendance were all encouraged to attend upcoming public meetings during the process and to voice their concerns. The HOA's Communication Committee will post all public meeting announcements, and when possible, put in the newsletter. The meeting was adjourned at 7:40pm.



Sally Dillon, Chair

COMMUNICATIONS COMMITTEE

by Sally Dillon, Chair

The Communication Committee met on July 10, 2017 to review progress on upcoming events planned and to plan the August newsletter. The La Entrada Communication Committee meets every other month for that purpose.

We continue to report information about the Proposed Pilot Flying J Truck Center in a factual and neutral manner because, as an offshoot of the HOA, the governing documents do not permit us to do otherwise. We strongly encourage you to attend the public meetings and to participate in the process. Michael Smith from HOAMCO will send out the public notices for meetings. The La Entrada Communication Committee will also post the public meeting notices at the mailboxes and, if the timing is right, include them in the newsletter. For more information contact SaveSFGateway@gmail.com and join the *SaveSantaFeGateway* Facebook page, as well as Nextdoor for further information and discussion.

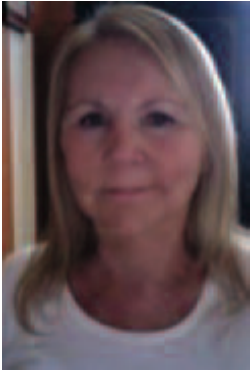
Please mark your calendars for these upcoming community events:

The first event we have coming up is the **Raptor Release at the IAIA Hogan on Sunday, August 27 at 6pm**. Plan to come early so you can purchase handmade greeting cards for \$3.00 or \$2.50 each for 2 or more. We will have some other items for purchase. Proceeds from the sale of all these items go to the Santa Fe Raptor Center to help feed and rehabilitate the birds. Last year we donated around \$1100 to the Santa Fe Raptor Center.

Our next event is our **Fiesta Picnic** which will be held at La Entrada Park on Saturday, September 9 from 3 – 6pm. We ask that you please bring a few non-perishable foods or can goods to jump start our Food Drive. Our fiesta foods will be catered and there may be a mariachi band.

Following the Fiesta Picnic is the 6th Annual Santa Fe Neighbor to Neighbor Food Drive. This will be held on Saturday, September 16 at the mailboxes north of Rancho Viejo Blvd on Calle Agua Clara from 9am – 12pm. Non-perishable food items and health care items will be collected as well as monetary donations. One dollar provides about 5 meals and \$20 provides 100 meals!

During our food drive, we will also be collecting reams and cases of white copier paper to benefit our neighborhood Amy Biehl Community School. Box Tops for Education collection will be starting soon.

*Judy Keller, Chair*

DESIGN REVIEW COMMITTEE

by Judy Keller, Chair

Summer has arrived and many of you have begun or have completed your landscaping and other outdoor projects. For those of you who have sought DRC approval - Thank You!

As a reminder approval from the Design Review Committee (DRC) is required for all changes or additions to landscaping: walls, fences and gates, changes and additions to outdoor lighting, awnings/shades, fire pits, kivas or BBQ pits, flagpoles, portals, patio

trampolines and shade structures, swing sets, play equipment, exterior window coverings or treatments and placement of yard ornaments. We request that you submit your screen/security door requests to the committee prior to purchase and installation. I'd like to stress that black or white doors are not an acceptable color. Such doors must be painted either your door or trim color.

Do not hesitate to contact your HOA Manager, Michael Smith, with any questions that you may have. The form for submitting landscape drawings, plans and modifications to the exterior of your home is available at the sales office or may be downloaded from the website: www.laentradaranchoviejo.org. Thanks so much for working with the DRC.

Please Pick Up After Your Pet

It doesn't take much to remember that we have pets in our community. In fact, if you don't watch your step, you are liable to step in one such reminder. Besides being unsightly and smelly, animal waste can be hazardous to the health of our children who play in the community and other pets. One of the most common forms of disease transmission between dogs is through fecal matter.

When walking your dog in our community, remember that it should be leashed. Also, it is important to remember to immediately clean up after your pet. Take along a baggie with you or get one from the "doggie stations" to pick up waste and then dispose of it properly.

By taking a few simple steps to clean up after your pet, you can contribute not only to the beautification of our community, but also towards the elimination of one of the most irritating nuisances in our community. Thank you for your cooperation!



Recycling Reminders

Paper, clean plastics and cardboard can be mixed together in the cart. However, No **GLASS** should ever be put into the recycle bin. If you wish to recycle glass, you can do so at the Rancho Viejo Recycling Center.

August

4th

and

18th



September

1st

15th

and

29th

If a specific homeowner does put glass into his recycling cart on a regular basis they will be warned, and, should that practice continue, MCT will no longer provide recycle pick-up at the home.

Also please note that the garage cart and recycle cart need to be placed at least 3 feet apart.

In **August**, recycle pick-ups will be **August 4 and 18**, and **September** pick-ups will be **September 1, 15, and 29**.

If you have any further questions, you can call MCT at 505-345-8651 or check out their website at www.mctwaste.com.

Audra's Corner!

RV Ladies Group June and July Activities

By Audra Hansche

The Rancho Viejo Ladies outing for June was a tour of the Santa Fe Botanical Gardens. Eighteen ladies met in the morning and split into two groups. It was a very sunny morning, so some of us relied on umbrella shade. So many wonderful plants to learn about. After the tour we had a little rest under the large shade structure and had some Q&A time with our tour guides.



After the tour we had lunch at Harry's Roadhouse on Old Las Vegas Highway. The Quesadilla with Smoked Chicken is always a favorite. Some ladies enjoyed the Sandwich with soup or salad. A few had desserts. The warmed strawberry-rhubarb pie with ice cream was scrumptious. The slice was so big there was plenty to share.



The RV Book Club met on Thursday, June 15th to discuss The Boys in the Boat by Daniel James Brown. But first, we enjoyed a very special guest: DG Okpik, an RV neighbor and published poet who shared her story and read some of her award winning poetry. Her books can be found in local Santa Fe bookstores and at museum gift shops.



Thursday, July 6th was a surprise birthday and thank you party for Audra Hansche at the Village Park. Good food, great cakes, and wonderful camaraderie made the event an occasion to be remembered, and a clear reminder of what a special place Rancho Viejo is



The RV Ladies outing for July was a tour of the IAIA Museum of Contemporary Native Arts downtown. Seventeen ladies met in the lobby and found their name tags. We met the newest Chief Curator, Dr. Manuela Well-Off-Man. She was able to give us a very extensive presentation of the most interesting pieces.





Santa Fe Public Schools are set to begin on Wednesday, August 16th, 2017!

Here are a few tips and reminders to make the transition easier for students, teachers and residents in Rancho Viejo:

- Amy Biehl Community School students and parents can take advantage of the Back to School Tax Free Holiday to stock up on school supplies August 4th – 6th.
- School begins at 7:50 AM and dismisses at 3:00 PM. Please consider giving yourself a few extra minutes on the road during these times as traffic will be heavier than usual. Also, to keep everyone safe, please obey school zone speed limits and keep an eye out for children.

YOU can help La Entrada support our community school by:

- Collecting Box Tops, and
- Donating reams of copy paper during the Sept. 16th food drive.
- * Stay posted for signage on the mailboxes for more info!